



ASSEMBLIES
Outreach

December 2007

Lutanda's 77th Anniversary & Reunion (page 7)



Also in this issue:

'Out and About' in NSW

My friend Cynthia

'The Door to Eternity' event

News from Home Workers

and more ...

Assemblies *Outreach*

Magazine Vol. 36 No. 6

Copyright © 2007 NSW Assemblies
Evangelistic Mission (NSWAEM)

The NSWAEM publishes this bi-monthly magazine to offer opportunities for NSW Home Workers, Assemblies, Para-Assembly Activities and other kindred bodies, to share information about their ministries and to foster prayer.

You are free to make use of the information in this publication and to reproduce it for your personal use or for the church you attend. Material must not be sold or republished for commercial purposes unless you obtain written permission first.

If material from this publication is used or quoted in any other publication (including web sites) due acknowledgment should be made.

Please contact the Editor (refer p31) with any inquiries about reproducing this material.

Contributions to *Assemblies Outreach* magazine are welcome and actively sought from NSW Assemblies and associated ministries and individuals.

Please submit your assembly news, people profiles, letters, etc. for the **February 2008 issue before:-**

18 January 2008

Contributors enjoy reasonable liberty in their expression of opinion and exposition of Scripture within the boundaries of a biblical evangelical Christian faith. Neither the Editorial Team, the Board of NSW Assemblies Evangelistic Mission, nor Home Workers are to be held responsible for every view that may be expressed.

Editorial & Production Team:

Mr C. Winrow, Mr G. Hayden,
Mrs. D. Hayden, Mrs. M. Winrow.

Subscription cost for **2008** is shown on page 27 (and includes p&p to anywhere in Australia)

Printed by Dominion Printing Co.
PO Box 6999, Silverwater NSW 2128

Phone: 02 9648 2888

STEWARDS FOUNDATION OF CHRISTIAN BRETHREN

A Corporation Constituted in NSW by the Stewards' Foundation of Christian Brethren Act 1989

WE WANT TO HELP



*AUSTRALIA WIDE - Assisting Assemblies and Assembly Related Organisations,
Assembly Missionaries and Assembly Workers both practically and financially.*

The Foundation:

- Can arrange through an intermediary, Housing Loan Finance
- Owns, operates and funds Christian Retirement Villages.
- Arranges Insurance.
- Funds Christian Schools.
- Acts as trustees of Assembly property
- Administers gifts, bequests, endowment funds.
- Accepts funds on deposit at competitive interest rates.
- Provides loan finance for new projects, extensions, vehicles, office equipment.

Enquiries: PO Box 131, Burwood NSW 1805
Phone: 02 9747 1351 & 02 9745 2092 Fax: 02 9744 1145
Email: stewardsfoundation@bigpond.com

First Glance

by Colin Winrow, Editor

Dear Readers,

Welcome to the last issue of 2007. It's hard to realise as I write this that Christmas and 2008 are so close; the year seems to have gone so quickly.

As far as publishing this magazine is concerned there have been two major changes this year. It saw the introduction of "fat" magazines as we included an extra supplement about Homeworkers in June and now, this month, we have the CBCS Annual Report.

A flow-on from this is that it's now cost-effective to print the magazine in full colour on every page, whereas beforehand only half the pages could be produced that way. This has made my job easier in terms of where to place colour photographs but I hope readers have also found the result helpful.

In 2008 we are introducing another initiative – the PDF version of the magazine (as described on page 28 of the October issue) which can be emailed direct to your computer. We are hoping this will not only make the content easier to search and reference for some people but that it will also encourage other subscribers to come on-board.

Some people have said it will only be the younger generation which take the PDF version, but initial trials indicate this is not completely the case. Those with difficulty reading small print may welcome the fact that the PDF version can be displayed on your computer screen as big as you care to make it!

Subscriptions for 2008 are due in January, and on page 27 you can see the new options available as well as

the normal annual subscription which remains unchanged from 2007.

This issue has several 'nostalgia' articles, including the letter from Ian and Valerie McDowell (page 10) who both turned 80 this year. I'm sure many readers in NSW will join me in congratulating them and thanking them for their many years of faithful service here.

For more 'history' – please also see the articles on pages 7 and 11.

Everyone associated with the Mission prays that God's peace and richest blessings will be upon all our readers and their families over the Christmas season, throughout the coming year, and indeed until the Lord's Glorious Return. □

CONTENTS of this Issue:

First Glance.....	3
'Out and About' in NSW.....	4
77 years - Lutanda	7
Ian & Valerie McDowell	10
My Friend Cynthia	11
'The Door to Eternity' event	17
News from Home Workers.....	19
Manager wanted for Camp	24
PDF magazine - survey report ..	26
2008 subscription rates	27
Elmer – seafarer sharing faith ..	28
Internet Corner	29

'Out and About' in NSW Assemblies

If you attend a NSW assembly or work with any associated Christian Brethren ministry, please feel free to submit your local news or event dates to this 'Out and About' section so we can encourage people in NSW Assemblies. Short items (even one or two sentences) are welcome and can be mailed to the office at PO Box 640, Burwood, NSW 1805, or faxed to 9484 6054, or preferably e-mailed to:-

outreach-mag@optusnet.com.au

Please e-mail your wording for Notices to include on the web site to:-

webadmin@cb-nsw.org.au

The last NSW Coordinating Conference for this year was held on 2nd November in a new venue – the Emmaus Bible College premises. We heard a report of the College's plans for the future and the new courses being developed under the AQTF (Australian Qualifications Training Framework). Some training could be either in-house or by distance education.

We also heard from a current student, Wadie Andrawis, who with a growing team of young evangelists, is sharing the gospel with many people on the streets of Sydney. (see page 29)

A new commended NSW Home Worker, Grant O'Donnell, was introduced. He and his wife Verna are serving the Lord in the Campbelltown Christian Brethren Church.

Over the weekend of 3rd and 4th November, the saints of Blaxland Assembly celebrated 40 years of worship and service based in their current building. The theme was

"Looking Back, Looking Forward" and Bill Newman, the guest speaker, gave some stirring and challenging messages, encouraging a "go forward" attitude.

Stewards Foundation held its AGM on 17th November at the new Glenhaven Gardens, and Lutanda Children's Services held theirs on 20th November.

Meetings & Events

[Note: For the latest and more complete information please check the 'Coming Events' page on the NSW Christian Brethren web site at:-


www.cb-nsw.org.au/events.html

2007:

- | | |
|-----------------|---|
| 27 Dec to 2 Jan | Family Camp at Camp Toukley. ph: 1300 733 189. |
| January | Lutanda's Holiday Camps (see advert on page 25) |

2008:

- | | |
|-----------|---|
| 3-10 Feb | Gospel Campaign at Bexley Christian Assembly, with Mr Peter Brandon (Bedford-UK) |
| 8 Feb | Ladies Missionary Prayer Meeting at Burwood Chapel. 10.30am ph: 9477 7568 or 9546 8545. |
| 9 Feb | 'Awake to Israel' at Epping Gospel Chapel, 2.30pm. |
| 11 Feb | Emmaus Bible College 1st Semester begins. |
| 14-16 Feb | Revival Meetings at Kingsgrove Gospel Chapel, with Mr Peter Brandon (Bedford-U.K.) ➤ |

28 Feb to 1 March	Gospel Meetings in the Christian Centre, Chullora, with Peter Brandon (see page 17).	11 July	Ladies Missionary Prayer Meeting at Burwood Chapel. 10.30am ph: 9477 7568 or 9546 8545.
2 March	Commencement Service for Emmaus Bible College.	28 July	Emmaus Bible College 2nd Semester begins.
8 March	'Awake to Israel' at Epping Gospel Chapel, 2.30pm.	8 Aug	Ladies Missionary Prayer Meeting at Burwood Chapel. 10.30am ph: 9477 7568 or 9546 8545.
14 March	Ladies Missionary Prayer Meeting at Burwood Chapel. 10.30am ph: 9477 7568 or 9546 8545.	12 Sept	Ladies Missionary Prayer Meeting at Burwood Chapel. 10.30am ph: 9477 7568 or 9546 8545.
21 March	Easter Conference Meetings (Good Friday) at the Bexley Gospel Chapel.	27 Sept to 12 Oct	Emmaus mid-semester break.
11 April	Ladies Missionary Prayer Meeting at Burwood Chapel. 10.30am ph: 9477 7568 or 9546 8545.	10 Oct	Ladies Missionary Prayer Meeting at Burwood Chapel. 10.30am ph: 9477 7568 or 9546 8545.
12-27 Apr	Emmaus mid-semester break.	14 Nov	Ladies Missionary Prayer Meeting at Burwood Chapel. 10.30am ph: 9477 7568 or 9546 8545.
9 May	Ladies Missionary Prayer Meeting at Burwood Chapel. 10.30am ph: 9477 7568 or 9546 8545.	21 Nov	Emmaus Bible College 2nd Semester ends.
9,10 May	Toukley Men's Conference, "Eyes on Eternity".	23 Nov	Emmaus Bible College – Celebration Service.
13 June	Ladies Missionary Prayer Meeting at Burwood Chapel. 10.30am ph: 9477 7568 or 9546 8545.	12 Dec	Ladies Missionary Prayer Meeting at Burwood Chapel. 10.30am ph: 9477 7568 or 9546 8545. 
13 June	Emmaus Bible College 1st Semester ends.		
June long-weekend	National Brethren Conference. Guest speaker Rod Wilson (Canada).		

**PLEASE submit your items
for the February 2008 issue
of this magazine
BEFORE 18 January**

NSW Assemblies Evangelistic Mission

Homeworkers Fund Treasurers' Report

Your Treasurers report that we have distributed your gifts for:-

	2007	2006
January - August	\$58,412	\$54,910
Sept: from Assemblies	2,727	3,094
from NSWAEM	2,000	2,000
from other sources	54	31
	\$4,781	\$5,125
Oct: from Assemblies	1,950	2,360
Christmas Gifts	1,925	1,745
from NSWAEM	2,000	2,000
from other sources	3,379	3,037
	\$9,254	\$9,142
Totals	\$72,447	\$69,177

The funds this period, except for designated gifts, have been divided between 15 workers.

Please make cheques payable to the NSWAEM State Home Workers Fund

Your gifts and letters should be sent to
The Treasurers, NSWAEM State Home Workers Fund,
P.O. Box 640, BURWOOD NSW 1805

Please consider leaving a legacy in your will for the State's Home Workers

Holiday House – Rental

Culburra Beach

on NSW South Coast – 2.5 Hrs from Sydney
Sleeps 8 people; 2 Showers & 2 Toilets
Pool & Large Yard / Rumpus room / 15 mins from the Beach
Ring for availability and bookings
Esther 0413 361 801

77 Years - Lutanda Children's Services

by Denise Lloyd, CEO
Lutanda Children's Service

Celebrating the past, the present and the future!

In July 1930, Miss Florence Dalwood and Miss Edith Sangwell opened 'Lutanda', a haven for disadvantaged and homeless children, at Wentworth Falls in the Blue Mountains, New South Wales.

In 1950 the children moved to a new purpose built home in Pennant Hills, Sydney, that catered for over 60 children at any point in time.

In 1951 the land at Toukley was purchased and Camp Toukley was established as a holiday retreat for the children and workers.

Seventy-seven years on, we celebrated this historic occasion with an anniversary celebration and reunion attended by over eighty current and former residents; carers; campers; family and friends. There were hugs and shrieks and tears of joy as 'brothers and sisters' recognised each other and were reunited, some for the first time in over 45 years!

Hosted at Camp Toukley over the weekend of 19th to 21st October 2007,



Lutanda Children's Home - 1957

there were also guests who had spoken at camp; been converted through camp; met their spouse at camp! It was an amazing opportunity to hear the stories, share the memories, laugh at photos and joke about old times.

"Memories Café" provided the perfect meeting place to sit, chat and reminisce over a cuppa, and two 'rooms' within the café provided a snapshot of a bygone era.

The 'Living Room' displayed Miss Dalwood's Bible, Miss Sangwell's diaries, and photographs and annual reports spanning our 77 amazing years.

The 'campers room' incorporated a double bunk, old surfboard and push bike, together with our "Norm - Life Be in it" storyboard formerly located in the camp foyer. Large photographs displayed on easels, tables and chairs, and lounges completed the atmosphere.

On Saturday, two bus tours took guests on a tour down memory lane, >8



Happy children - early 1930s



visiting old stomping grounds like the Rock Pool, Soldiers Beach and Norah Head Lighthouse, and of course that gave way to even more tales of adventure! One reunion guest commented that 'Christmas holidays were amazing weeks of fun and activity. The next Christmas always seemed to take an eternity to arrive - they were fantastic times.'

Site tours of Camp Toukley were also enjoyed with guests in awe of the new adventure activities; and thrilled to see the vision of the facilities planned for the future.

Saturday evening was a Grande Celebration – a beautiful banquet, with four former residents and carers sharing some of their stories, highlighting God's call and loving hand on their lives. Tribute was also paid to past and

present children, staff, board members and supporters – we have a rich heritage and a respected presence. The weekend closed with a reflective and worshipful thanksgiving and celebration service.

A formal reunion is being organised for 2010 to coincide with Lutanda's 80th Birthday and the official opening of our new facilities. If you are interested in being kept informed of future events, please email your contact details to dlloyd@lutanda.com.au.

Out of Home Care

We continue to be a dynamic organisation and it is our great honour and privilege to provide Out of Home care accommodation for an amazing group of children and young people - we are so proud of their growth and accomplishments. This care is based on the original concept of a Christian parent model. We support the spiritual, emotional and physical needs of children and young people in our care by modelling a balanced lifestyle of family relationships, education, sport, work ethic, and worship.

Our Group Homes are accredited with the NSW Office for Children - Children's Guardian, and our Camp Toukley site is NARTA accredited - something very worthwhile. □



Talk & refreshments - 20th October 2007

BECOMING ONE! Christian Youth Council (NSW) and Lutanda Children's Services have become one organisation.

As two Christian Brethren community services, Lutanda Children's Services and Christian Youth Council (NSW) have worked together for many years sharing resources and ideas; encouraging one another in our ministries and praying for God's guidance for partnership opportunities.

At times we have talked seriously about joining forces, but it wasn't until 2006 that we started to document what such a union might look like and how it might work. First and foremost the purpose of amalgamating the two organisations was to make them more sustainable in order to advance the kingdom of God. The organisations officially became one organisation under the banner of Lutanda Children's Services on 1st July 2007.

The merger process also caused us to reconsider who we are, what we do and where we fit in the marketplace.

So we are now on a journey to develop an organisation that is true to our vision and calling; relevant to our community; financially viable and excellent in serving our customers – who include members, guests, volunteers, our community partners and the church.

Part of that journey has been the development of new logos that reflect our identity and activities, especially in the arena of Christian camping – one that unites Camp Toukley and Christian

Youth Camps - Eltham Park, Mt Victoria and River Park, Yarramundi.

Our name will remain as Lutanda Children's Services. Our founder, Miss Dalwood, chose the name Lutanda, an African word meaning "when the morning star appears, I'll be off" – it signified the importance of being at our post till the Lord's return.

Our foundation is the Word of God and this is graphically represented in our new logo. Our Vision is to care for children; present the Lord Jesus Christ; honour God.

Our three camping facilities will now be known as Recreation and Conference Centres and will continue to provide a strong outreach ministry through school holiday camps and camps for people of all ages with physical and intellectual disabilities. These camps also provide strong discipleship and leadership development opportunities through involvement in various camp teams and programmes. We also provide a broad range of programmed school camps, conferences and church camps.

Lutanda Children's Services is blessed with a dedicated Board of Directors and staff team who continue to see our roles as a JOY – Jesus, Others, You!

Be blessed and be prayerful – together we are laying a foundation for the generations of children yet to come.



Letter to the Editor – “The Big 80”



from Ian McDowell
Principal of Emmaus Bible College
1961 to 1983

Valerie and I each turned eighty years of age this year, and the house is papered with “big-80” cards and emails. Thanks to all for your kind birthday greetings and appreciation for the Emmaus past.

We are by grace both well and rejoicing. We continue actively in spiritual matters: CRE in the local primary school (Parkhill), regular teaching at Ashwood Gospel Chapel fortnightly, Valerie’s “Know Your Bible” class and all the usual related activities. We have been “commended” since leaving Telstra at the end of 1989. Subject to the opinion of our brethren and sisters, I think that at eighty years of age we are teaching God’s Word better than we ever did.

Since leaving Emmaus at the end of 1983, I returned to telecommunications engineering for six years, and “got ahead” financially sufficiently so as to be independent of the need for Brethren support. So we seek prayer support only.

This is probably just as well, for

the system in Victoria is different from that which stood the test of time elsewhere. This has a number of consequences, one of which is that this State does not have the worker support arrangement which “Outreach” brethren operate, with the result that Victoria lacks the number of “commended faith workers” which NSW has. There are other areas of confusion.

We at Ashwood simply continue steadfastly in as close fellowship with our Lord as we can, and rejoice in a happy and fruitful assembly, with regular evangelism and excellent adult converts and baptisms year by year.

The correspondence Bible school at Emmaus Australia continues normally, but the level of resident Australian student teaching activity is low, which is a sadness to us, having spent half our Christian-work lives in service there. Our land has too few assemblies, and they are too far apart, to provide the support Emmaus requires. The old-time Bible colleges are flourishing, as is Emmaus in the U.S.A, with their much wider support base.

Our eldest grandchild has been accepted for GLO Smithton next year. We rejoice in the number of our descendants who are active for our Lord Jesus.

We plan to continue steadfastly as described until our Lord’s call, with trumpet fanfare: “Come up hither”.



My friend Cynthia

by Betty Hayden

Cynthia Riseham has been my friend for over 30 years and her story is one that reminds me of the wonderful way God brings His chosen ones together to enable His programmes to be brought to fruition.

Have you spoken with Cynthia lately? If you have phoned the office of the New South Wales Outreach Bookshop over the past 10 years you would know Cynthia as the woman answering your call, ready and able to assist you with any inquiry relating to the buying, selling, and distributing of a wide range of Christian greeting cards, books, stationery and other gift items eagerly sought after, especially by women at ladies Weekend House-parties. Cynthia's job description covers most facets of the operation of Outreach Book Shop.



If she were employed in a secular business she would possibly have one or all of the following work place titles – Bookkeeper, Finance Manager, Accounts Payable, Purchasing Officer responsible to keep close contact with suppliers and to have a working knowledge of what is currently available in the latest Christian Book publications. Her role has been to encourage fresh



sales outlets, keep the stock moving, pack, post or have delivered orders to customers in a wide range of locations, as well as travel with a car load of stock to whatever Campsite location was hosting a ladies Bible Study weekend house-party.

Cynthia doesn't have any of the above-mentioned business titles. Her title is and always has been "Volunteer." She is not a Full Time Worker as we in Brethren Assemblies describe our Home Workers and she is not an employee. She is and always has been a multi-talented woman who has chosen to serve the Lord by serving His people using her natural skills and growing into a role that has contributed to the ability of New South Wales Assemblies Evangelistic Mission (NSWAEM) to operate a profitable commercial outlet with the desire to assist in meeting the financial needs of NSW State Home Workers.

It was June 1976 when Graham Hayden resigned from his career as >12

State Manager with a large International Pharmaceutical Company in response to a call from Captain Fred Wilkins for a younger person to join him in the administration at Outreach Mission Centre and ultimately to continue the work that Captain Wilkins had begun.

Captain Wilkins was continually looking for projects to raise funds for the support of the NSW State Home Workers and, when the Haydens resigned from secular employment and were commended by their local Assembly to full-time faith work, Captain Wilkins saw an opportunity to use their commercial skills and he seriously set about to investigate the possibility of opening an Opportunity Shop. Something which had never been done before in the Assemblies!!

We often say God works in mysterious ways and the story that follows gratefully expresses that thought. A local dry cleaning business in the Southern Sydney suburb of Mortdale offered the Evangelistic Mission a dry cleaning agency shop owned and operated as a second outlet for their busy dry cleaning business and situated in the main street of Mortdale. The arrangement was offered and accepted – on condition the staff who manned the Opportunity and Christian Book shop also served the customers leaving and collecting dry cleaning and processing all garments ready for pick up and delivery by the operators of the Dry Cleaning Business. This arrange-

ment included a percentage discount paid by the Dry Cleaner for the operation of the Agency.

So began a new opportunity to market Christian literature, recycle clothing and household needs, manning a Dry Cleaning Agency with the goal of adding some funds to the support of Home Workers in the NSW Assemblies. We were in the local market place and we were meeting the community in a way that had never happened before. We were to learn that God had a much wider plan for what was just beginning.

Graham and Betty were actively involved in the outreach at Oatley Gospel Chapel which at that time had a flourishing Sunday School, Boys and Girls Rally, talented Youth Group and very able Bible Teachers who nurtured and encouraged their flock.

Into this active children's ministry came a little girl named Tracey Riseham and close behind her was a very caring and concerned mother called Cynthia.

Cynthia was an enthusiastic person and as she visited the activities of the Chapel and the Sunday School she became my friend and a committed supporter of all that was happening in the work of the NSW Assemblies Outreach.

Cynthia had grown up in the inner Sydney Suburb of Earlwood and had attended the local Church of Christ Sunday School. It was here Cynthia heard the good news of God's saving ➤

‘... God had a much wider plan ...’

grace and, without any family that shared her new found faith, she was baptised as a believer. In 1957 Cynthia married Alan Riseham and they settled into their new home in the suburb of Peakhurst.

They had one child, a daughter Tracey who joined the Girls Rally and Sunday School at Oatley Gospel Chapel. Cynthia enthusiastically encouraged Tracey to become involved – with the prayer that her loved daughter could also hear that she was loved unconditionally by an all knowing, all powerful God.

During this time Cynthia quietly dedicated herself to serving the Lord in whatever way He led her as she volunteered her time and talents to supporting the outreach at the NSWAEEM Opportunity Shop.

The Opportunity Shop and Christian Book Shop opened in the Spring of 1976. Volunteers had re-decorated the shop, built display stands and mailed out books and greeting cards. Meanwhile there was great activity behind the scenes as donations of “pre-loved” goods began to arrive. Retired professional ladies from Brethren Assemblies at Caringbah, Penshurst, Campsie and surrounding suburbs volunteered to serve in the shop on a regular roster basis.

The Dry Cleaning agency meant the shop had to operate from 8.30am to 6.00pm on weekdays and 8.30am to 12.30 pm on Saturdays. This was no small effort for those of us with children at home and for those who had reached

retirement age. We learnt valuable lessons about serving each other in love and then, as we became known in the community, we realised we were working in an area that gave great opportunity to witness to a largely unchurched community.

We initially had no idea of the enormous task of sorting the donated clothing and making it suitable for display. The ladies from Campsie Assembly committed themselves to



regularly work as a team sorting and separating the goods that were saleable from those that would need to be sent to the rag merchants. We especially were helped by their reliability and their sense of humour that lightened the load of getting donated goods from the store to the shop. The shop could not have operated without their back-room labour, their prayer and Biblical encouragement. We shall always thank God for their enthusiasm, their dedication and the humour that was so important when the task seemed totally unending.

A Christian friend donated an old Bedford utility truck to the shop for

>14

the transport and collecting of donated goods. We negotiated with a rag merchant at Villawood to dispose of any clothes that were past their use-by date and Graham and Betty made regular trips to Villawood with the old truck loaded with rags. These were purchased from us and used by the rag merchants for sale to industries that use cleaning rags. Not what we had expected to do when we committed ourselves to serve the Lord full-time, certainly not how the writer expected to spend her days when she reached her mid-life years.

Hindsight is a great thing, and we now know it was the most valuable experience and the Lord was preparing us all as He opened doors and led us into areas of ministry that we could never have dreamed possible. Much more could be written about the lessons learned, the lives changed and the friendships nurtured during the operation of our Opportunity Shop in Mortdale and perhaps at another time we could write about those life transforming years.

The team of ladies who volunteered to meet the shop rosters remained committed to their service until failing health for some made it impossible to continue to travel to Mortdale.

Cynthia served in the work at Mortdale from the time the shop first opened until it closed at the beginning of 1981 due to a number of difficulties and economic reasons. She was a

multi-talented lady and gave herself tirelessly to the continued operation of the Outreach Opportunity Shop, where she learned to appreciate the importance and the value of marketing high quality Christian literature.

The central office of the NSWAEEM (then in Gowrie Street, Erskineville) was at that time a major centre for the distribution of Christian books and Cynthia was warmly welcomed to join the many volunteers who worked tirelessly in all areas of business management and administration with a shared commitment to assist and support the activities of the many full-time faith workers in New South Wales.

God has blessed Cynthia as she has

‘There is also much more to tell ...’

proved Him to be her all powerful, all knowing Saviour, friend and Lord. In a future article we hope to tell of the

strain caused by her husband's failing health and God's great faithfulness in all circumstances. There is also much more to tell of the way God led and blessed this ministry that was begun by Captain Freddie Wilkins in his great God-given exercise to see the work of evangelism grow and be fruitful in New South Wales.

[A Note from the Editor: Perhaps some of those early volunteers, and members of the families of those who are now with the Lord, may also like to contribute something of their recollections of those highly active days of the Opportunity Shop? These could be published in future issues of this magazine. Let's visit and learn from some more of the (almost) 'forgotten' history!]



AWAKE TO ISRAEL

Meetings are held monthly, February to November,
2nd Saturday, 2.30pm at Epping Gospel Chapel
cnr Carlingford Road and Duntroon Ave, Epping.

The Purpose is to: Study the Scriptures under the leadership of competent Bible teachers; Communicate with workers in Israel, particularly Brethren assemblies, to encourage and uphold them in prayer; Review current events; and Pray for the "Peace of Jerusalem" – recognising the promise "... they that love thee will prosper". For further information phone (02) 9869 7164.

All are welcome and are encouraged to come and together search the Scriptures. For further information phone (02) 9869 7164.



"He explained to them the Passages in every part of Scripture which referred to Himself."

Luke 24:27

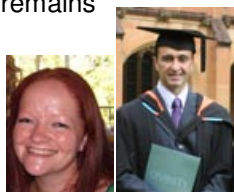
emmaus bible college

When Emmaus began in 1959, the vision was to prepare young people for overseas missionary service or for lay ministry within Christian Brethren churches. Though over the years different programs have been followed, this vision remains central to the work of Emmaus. We want Christians to be effective in their witness within their local churches and in reaching non-believers.

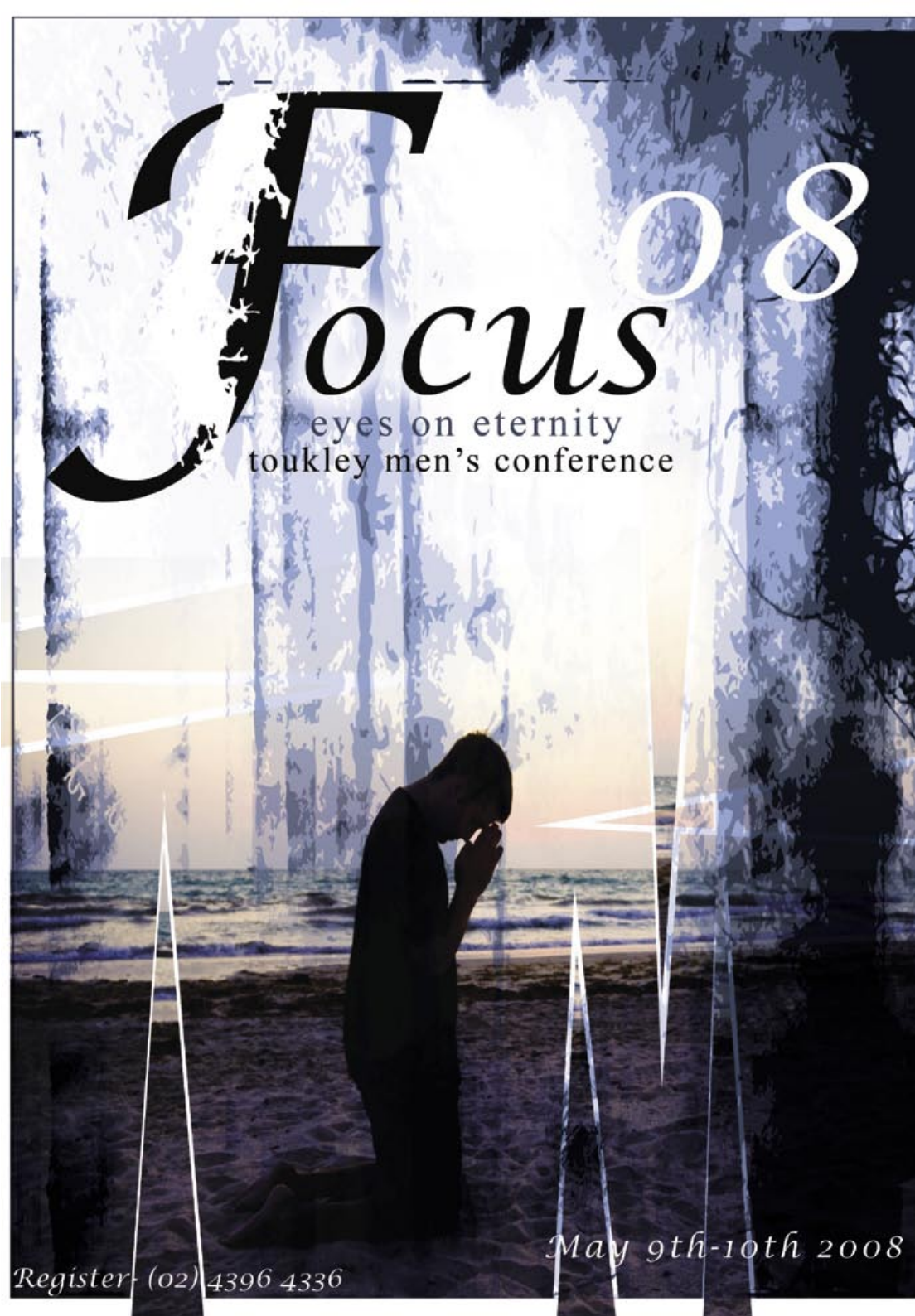
Courses can be taken for credit or audit, full or part time.

**Please contact us for a
2008 Prospectus.**

Come to Emmaus and learn to love the Word of God and the God of the Word.



240 Beecroft Road, Epping Tel: 9876 4370
admin@emmaus.edu.au www.emmaus.edu.au



Focus 08

eyes on eternity
toukley men's conference

May 9th-10th 2008

Register (02) 4396 4336

"The Door to Eternity" - an event in 2008

by the CSM Team

Kingsgrove Gospel Chapel is seeking the help of other NSW assemblies for their next outreach event. The event will be in Sydney in March 2008. Please pray and see how the Spirit of the Lord will lead you. The name of this coming event is: "The Door to Eternity"

"Behold, I stand at the door, and knock: if any man hear my voice, and open the door, I will come in to him, and will sup with him, and he with me."

Revelation 3:20

CSM (Come and See Ministries) is a team dedicated to the spread of the gospel in Sydney. They are a small group of believers who actively pursue the lost in various ways, such as in preaching the gospel, drama, short videos and song. They are currently immersed in organising a gospel event called, **"The Door to Eternity"** which they would like to be made known among the believers first.

Historically, they enjoyed great blessing in their first event **"The Betrayal"** and quickly planned to hold a second, larger event. During The Betrayal over 800 people attended the event and numerous lives were changed. Now, this second event is



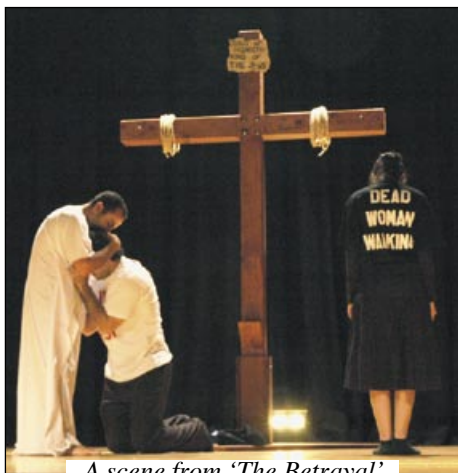
A scene from 'The Betrayal'

expected to attract well over 3,500 persons in **February and March 2008** (**14, 15 & 16 February** will be revival meetings at the Kingsgrove Gospel Chapel and **28 & 29 February and March 1** will be Gospel meetings at the Christian Centre, Chullora).

The purpose of this event is two-fold: first, for the encouragement of the saints and second, the salvation of sinners. In a program scheduled over two weeks they have invited Evangelist, **Peter Brandon**.

He is well known among the assemblies in the U.K. and abroad as a gifted preacher and is quite familiar with large meetings.

CSM hopes to attract as many people as possible and invites you to make a pledge of interest by confirming your



A scene from 'The Betrayal'



attendance. Secondly, they make one appeal before you come and that is that you bring at least one person who is unsaved. While these events can attract many godly believers, our real purpose is in placing sinners in direct view with the Saviour. Quite simply, in a world which is attracted to anything but its Creator, we have a great responsibility in showing them the beauty manifested in an all-loving Saviour. As men and women we cannot save others, but we have been commissioned to take a keen interest in those who do not know our Lord Jesus. Through this event, CSM pray and ask *whosoever will* by joining hands in this campaign, and to entreat the Lord by faith to reap a great harvest in these last days.

For more information and to confirm your ticket please visit the web site:

www.thedoortoeternity.com

Please note that this website is designed to attract unbelievers. While it has an abstract and mysterious feel, we ask you to take note of the following; the Flash introduction represents dying lives by a withering room, which is a sobering reminder of death for unbelievers.

It is a dwelling of decay, cracked and ripe for demolition. Although, in

the centre of the room stands a door with light protruding at its edges. If activating the mouse controller on your computer opens this door, then a brilliant light consumes the room, which plainly speaks of a relationship with the Lord. Please keep these thoughts in view when retrieving information.

A number of people are needed to volunteer to help with the event in the following areas:

- 1) Prayer groups;
- 2) Follow-up for those who make decisions;
- 3) Traffic flow and coordination;
- 4) Video recording/editing;
- 5) Lighting/PA controllers;
- 6) Print/media distribution;
- 7) Other practical contributions.

Most importantly we look to the Lord in all matters and from there to His beloved saints whose concern is the kingdom of God. If you would like to participate please contact Brother Peter Hanna by email:-

Peter.Hanna@thedoortoeternity.com

or phone Bethany Gift House on 02 9743 6592 during business hours.



News from commended Home Workers



Graham & Betty Hayden
November 2007

A Christmas Letter:

2007 is fast drawing to a close and the world is caught up with a rush to plan and spend in an



effort to make this Christmas season "the best ever." It is good for families to gather together to share and hopefully enrich their relationship. Sadly, as believers, we look on and know that all is empty unless the reason for the celebration is based on the announcement made by the Angels to the shepherds so many years ago.

Luke records this great event and we read with wonder the record of that wonderful announcement made to the humble shepherds by the angels sent from God above. Chap 2: verses 9 to 11:-

"An angel of the Lord appeared to them, and the glory of the Lord shone around them, and they were terrified. But the angel said to them "Do not be afraid. I bring you good news of great joy that will be for all people. Today in the town of David a Saviour has been born to you; He is Christ the Lord."

The long predicted, long expected Messiah, God's appointed one came to bring rescue and reconciliation with the Holy Creator God for all people.

In our modern-day world where the tinsel and gift giving has drowned out the spiritual truths of the festive

celebrations, gift giving has reached a point where many may have overdone the tradition and given gifts for the wrong reasons. The original idea behind it is beautiful. It reminds us that Christmas celebrates God's unspeakable gift – even Christ Jesus the Saviour of men.

As we move to this important time and we celebrate again the birth of our Lord Jesus may we, with you, give thanks for God's great love, His mercy and His compassion – not forgetting that we are indeed children of the God of Hope, the God of all comfort, the God of compassion, the God of consolation, of patience, of grace and glory.

Throughout these past months we have been especially aware that we are the children of "The God of Hope." Our desire for all who read this letter is that you may be encouraged as you are again drawn to the wonderful unchanging truths of scripture and may we all be drawn to give thanks unto God for His unspeakable gift.

Romans 15:13 "May the God of Hope fill you with all joy and peace as you trust in Him, so that you may overflow with hope by the power of the Holy Spirit."

Many who read this letter are already aware of the sudden health crisis that confronted us as a family in mid-October when Betty had a cerebral bleed that was a serious health issue and necessitated her admission to John Hunter Hospital in Newcastle where she was placed

➤20

under the medical care of a neurological specialist.

We want to thank so many of you who prayed for us during that time and we are now able to report that her condition is slowly settling down.

Graham has kept close by her since her discharge from hospital and although the early days were at times stressful, he has taken over most of the domestic matters at home while keeping a supervisory eye on Betty and maintaining his role as Secretary to the New South Wales Assemblies Evangelistic Mission from our home office, and driving to Burwood office on a weekly basis.

On November 22nd we had an appointment with a cardiologist in Newcastle for a re-assessment of Betty's original cardiac condition (the treatment of which had set the scene for the cerebral bleed) and after checking and testing Betty he was satisfied that her cardiac condition is not a major cause for concern at the moment. We praise God for His grace and mercy, and we thank all who have carried us with their faithful prayers and encouragement.

Praise God from whom all blessings flow.

Have a happy and holy Christmas.

Graham and Betty Hayden.

Geoff & Elizabeth Folland November 2007 (extracts)

5th November

Hi. This is the last week of classes for the year. Our weekly meetings this



week will be a time of celebration for what God has done and a farewell to those who are graduating.

Last week I collated the results of our ministry. There were over 600 questionnaires conducted on campus where a SLer sat and asked questions of a potentially interested student for about 20 minutes. We led 59 students through the Christianity Explained course. 17 students have indicated decisions to follow Christ so far (some CE's are still running) and at least 13 of those are still involved with us. Obviously these numbers reflect many hours and hours of work and prayer by the key Student Life leaders (missionaries and students) on campus. What a privilege it is to lead such a team. There are lots of students graduating this year. So many have been key leaders in our movement – they will be keenly missed. Although above I said we “farewell” them, in reality we are “sending” them. We are sending them to help fulfil the Great Commission wherever they go by sharing their faith with and discipling people in whatever context they enter. Some of the students who are graduating from Macquarie Uni this year: Joshua, Tim, Anna, Judy, Jess, Greg, Jess, Eddy, Irene, Carmen, Johnny, Kelvin, Vania, Vicky, Steve and Jon.

It is so encouraging to see God working in the lives of students on campus.

Thursday 15th November

Hi. Without any fuss we picked up Katrise's passport yesterday. We are now all ready to leave for the USA in 15 days. Philip celebrated his 6th birthday ➤



yesterday and has a party tomorrow (Friday) afternoon. Liz's birthday is Saturday. I have an exam on Old Testament on Monday that I am trying to study for. It helps me empathize with the rest of the students on campus!

Tuesday 27th November

Hi. Last night Liz and I enjoyed hosting the student executive team from campus for dinner. After a raucous meal, we got down to the serious business of discussing the state of plans for next year. Since we leave on Friday, we needed to make sure everyone was 'on the same page' concerning contacting new students, planning the kick-off retreat, O-week and the Atrium meetings. There is so much to be done during those critical 8 weeks at the start of the year.

Only three more sleeps to go before we leave for the USA! The house is a whirlwind of suitcases, clothes, packages and 'to do' lists. Liz is looking forward to going 'home' for Christmas. Colorado is home for her because her family is there and so are many memories.

A summarized itinerary of our trip:

30th Nov: Depart Sydney 3:15pm

3rd Dec: Depart CA.

7th Jan: Fly from Indianapolis to Denver, to LA, to Sydney.

9th Jan: Arrive back in Sydney.

We're certainly looking forward to connecting with as many of our ministry partners and friends as we can while we are away.

Please pray for safe travel without incident. Pray that Philip and Katrise will handle all the changes well – new places, new people, constant moving.

Pray that we will be able to meet with all those who are so important to us. Praise God for His provision for us with this trip.

Liz added: "We are all doing great. Philip has finished kindergarten and we are so proud of how well he has done. Katrise is blossoming, filling our home with singing and dancing and Geoff and I are enjoying the privilege of being their parents and of being married to each other."

We hope God is blessing you in your life as well. We are so thankful for you and your faithfulness to us and to Him. Have a wonderful Christmas and New Year.

In His love and grace,
Geoff & Liz

Jane Mayhew October 2007

[The following are extracts from Jane's newsletter 'Into the Barrow']

Well, my first year on campus has officially come to an end! Yes the university year is quite short and it is very scary how quickly time has flown by this year. The students are consumed with their exams at the moment and I definitely feel very blessed that the season in my life for exams is over, well at least for the moment.

Over the last month I have been receiving much 'input', which is great considering so much of my job is 'output' – I feel very privileged to have received so much quality teaching into my life. >22



The first time was our Campus Crusade Missionary Conference, Connexions. I had a week of training for my role as a missionary and finally I attended the Willow Creek Global Leadership Summit. I feel so full – pray that God would help me process everything that I have learnt so it will not go to waste.

In spite all of this I have been feeling quite distant from God and I have been so focused on doing things that making time to spend with God has not been a priority for me! Please pray that God would continually remind me of my deep need for him and that he desires me above all else and not the things that I do!

There are many changes happening for me in the near future and these involve many people moving, two interstate in fact! First, Lainey, who is our senior female missionary at Sydney Uni and who has also been my trainer, is moving to Brisbane. While it was a huge shock for me to hear that she was leaving us it is very exciting for her to be taking on a new role. She will be injecting a much needed female presence at the University of Queensland. Please pray for her as she leaves and starts afresh in Brisbane and pray for our team at Sydney Uni as we will be stretched next year.

Second, James is moving to Melbourne with our new Campus Crusade for Christ Australia headquarters at the end of November. James works as our Information Technology guy, so he has an invaluable role to play in setting up and also continually running our computer systems among other things.

Please pray for God's peace to reign in his heart as he co-ordinates moving the

headquarters and that everything will run smoothly.

Pray for our relationship, that God would grow us closer to him and closer to one another, although we will be physically separated.

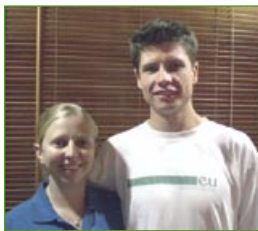
I am also moving house! While it's sad to be leaving Eastwood and my home with Wei, I am very excited as my new house is only 5 minutes walk to Sydney Uni! It will be such a blessing not to have to travel on peak hour trains to and from work! I will let you know more about the women I will be living with in my next update.

Praise God for his provision of a house that is so close to Sydney Uni! Pray for us as we finalise all the details regarding moving house and that God would have his hand upon us as we settle in.

Thank you so much for all your love, prayers and support, they are so valuable to me!

Now, news of three families collected by Don Crane for the November Outreach Prayer Requests bulletin:-

Dave & Sarah Thompson



Praise the Lord for opportunities to share the Gospel this semester at Sydney University. We have been running courses

explaining Christianity to international and local students. These courses have been a great encouragement and during the semester we have seen a number of ➤

students come to Christ in faith and repentance.

It's a great opportunity we have to study the Bible with students and to encourage them in their faith and witness. Please pray for the keen new student leaders in the Evangelical Union whom we are training and equipping to serve God with the whole of their lives. Pray also for Sarah, as she finishes working with students she's walked alongside for two years. Some she has mentored and supported over the last two years. Pray they will continue to grow in knowledge, love and service of the Lord.

Sarah hopes to devote more time to church work next year. Pray for the growth and development of the EU Graduates Fund staff team working at Sydney University. Pray also for Dave as he helps lay down plans for the ministry in 2008. He is involved in organizing a Campus-wide Mission event for two weeks, next year. We pray that God will use His people and this event to bring many to Himself. We really appreciate the support and prayers of the Assemblies Outreach Magazine.

Greg & Sarah Clark

We've been through a very busy time, at Camp Kedron. We've had camps for 28 days straight in October.

We are very grateful for all the helpers that come to Camp and volunteer their services. Please praise God, with us,



for them. Pray for Joan Chambers as she co-ordinates the team of follow-up workers for this important activity. Pray for the past campers who have committed or re-committed their lives to God and that they may continue to grow. The opportunity to give the Gospel to school groups that use the Camp site throughout the year is a great privilege. Please pray for health & strength for all those living on-site. We need someone who is interested in Grounds Maintenance to help at the camp site. Please pray for the finance necessary to complete the projects we have undertaken. Praise God for the completion of the Basement renovations; next is the renovation of the Dining Room. The new sail over the front of the main building certainly adds to the outdoor space. Thank you for your prayers and on going support for this vital activity.

Emad & Suzy Habashy

Currently I am serving in my local Assembly at Kingsgrove Gospel Chapel. I am involved



in the preparation of Arabic Radio programs where the Gospel is shared, and I minister the Word of the Lord on Arabic free-to-air Christian television programs. I also minister the Word of God frequently, at various Arabic meetings around Sydney and overseas, such as New Zealand and Egypt. Your prayers for me and my family in the ministry the Lord has given us to do, is very much appreciated. □

EXPRESSION OF INTEREST – CENTRE MANAGER

**Yarramundi – River Park
Available in 2008**

Established in 1930, Lutanda Children's Services is a Christian Brethren community service organisation providing a range of services that flow from our Vision to *Care for children; present the Lord Jesus Christ; honour God.*

Yarramundi Recreation and Conference Centre is also known as 'River Park'. Located on the banks of the Nepean River 10km South of Richmond and 70km North-West of Sydney NSW, Yarramundi provides a high standard Christian Camping and Conference experience for schools, churches, children's holiday camps and conferences. The Centre has a variety of facilities and is able to sleep up to 110 people in ensuited accommodation.

As Site Manager, you would be responsible for the provision of customer focussed service through decisive leadership of staff and sound management of resources in accordance with our policies, Vision and Values.

Applicants expressing their Interest should be able to demonstrate the following:

- ✓ Readiness to work within the Christian ethos of Lutanda Children's Services including its Vision and Values
- ✓ Demonstrated practical experience in Camping, Hospitality, Tourism and / or a similar related industry / ministry
- ✓ Genuine commitment to and compliance with, Working with Children, OH&S, EEO and other legislative requirements
- ✓ Leadership and management of a complex unit or diverse disciplines
- ✓ Willingness and ability to lead by example through a "hands on" approach
- ✓ Proven expertise in the development and maintenance of appropriate administrative systems and functions
- ✓ Understanding of HR practices including performance management
- ✓ Willingness to undertake a Working with Children check
- ✓ Clear communication and networking strategies
- ✓ Commitment to continuous improvement
- ✓ Ability to develop rosters and work plans
- ✓ Strong customer service orientation
- ✓ Sound financial management
- ✓ Hold a Current Drivers licence

An attractive salary package will be negotiated with the successful applicant. Please express your Interest to Aaron Daniell at Lutanda Recreation & Conference Centres, PO Box 21 TOUKLEY NSW 2263 or email aaron@camptoukley.com.au



Lutanda Holiday Camps call us 1300 733 189

4 camps • 2 locations

Lutanda Holiday Camps • Summer at camp

***January One* [yrs 5-12 at school] Eltham Park**

When: Sunday 6th January 2008 -
Saturday 12th January 2008

Start: 4:30 pm **Finish:** 10 am **Price:** \$269.00*

SIBLING DISCOUNT APPLIES TO THIS CAMP

6 nights of awesome fun with activities such as
Archery, Craft, Water Activities and a Dunking Booth
Directors: David and Sandie Sellen

***Wet n Wild* [high school] Eltham Park**

When: Sunday 13th January 2008 -
Saturday 19th January 2008

Start: 4:30 pm **Finish:** 10 am **Price:** \$289.00*

Loads of fun packed into 6 nights. Experience sun
drenched summer days filled with outrageous water
activities
Directors: Dan and Lil Reithmuller

Primary Camp [yrs 5-6 at school] Camp Toukley

When: Sunday 6th January 2008 -
Saturday 12th January 2008

Start: 3 pm **Finish:** 10 am **Price:** \$269.00*

6 nights of summer excitement with water activities,
Giant Swing, Quads, Archery & Flying Fox.

Teen Camp [high school] Camp Toukley

When: Sunday 13th January 2008 -
Friday 18th January 2008

Start: 3 pm **Finish:** 3 pm **Price:** \$279.00*

Crazy times with water activities, Giant Swing, Quads,
Archery, Flying Fox and Leap of Faith all jammed into
5 nights

1300 733 189



LUTANDA

Recreation & Conference Centres



Christian Youth Camps

www.camptoukley.com.au



Readers may recall that the October magazine included information on page 28 about a possible plan to make available a PDF version of future issues of this magazine, IN ADDITION TO the current paper version. We put out a questionnaire to some current subscribers who have Internet access, and we requested feedback from all our readers.

The results have not been very revealing. A total of eleven people responded and only six of those addressed the questionnaire in detail.

However, some things did emerge. A large majority of the respondents praised the initiative and said they could see benefits from the PDF version, but most made it very clear that they still wanted to receive the paper version too!

They can be reassured that this will be the case. There never has been any intention to 'phase-out' the normal printed magazine.

Some respondents indicated they knew of quite a few people who, although not receiving the current magazine, would probably welcome the PDF version. However we never heard directly from any people in

that category, nor did we get any indications of what such 'new readers' might be willing to pay.

Of those who want to receive both, opinions ranged from \$0 to \$5 as an acceptable extra cost per annum. Of the few who wanted to switch from paper to PDF version, \$15 was the maximum they were prepared to pay for the annual subscription.

Given these 'hazy' results the NSW AEM Board has decided to initially release the PDF version on the basis indicated in the October article, and using the subscription pricing structure detailed in the panel opposite, on page 27, (and on the NSW Brethren web site) for a 12 month trial period, starting with the February 2008 issue. Towards the end of 2008, the Board will review the uptake of the PDF version, and people's comments, and will decide whether to alter any of the arrangements for 2009.

Thanks again to those who have helped in this process so far, and we hope many more readers will let us know their thoughts on the new option as next year unfolds. □



If you wish to sample the PDF version,
the last six magazines
(December 2006 to October 2007)
are available in this format on the web site via:-

www.cb-nsw.org.au/aem/Mag/previous.html

ASSEMBLIES OUTREACH MAGAZINE
SUBSCRIPTIONS FOR NEXT YEAR

are due in

January 2008

The 2008 subscription price is still \$25 for 6 issues,
BUT we now have other options as well....

Annual subscription – for 6 issues of the normal \$25
printed-on-paper version.

(Price includes P&P anywhere in Australia and
can be ordered by individuals or in bulk through
assemblies and other organizations.)

Optional Annual subscription for a PDF version of \$5
each issue **in addition to** the paper version.

(This can **only** be ordered by individuals, via
email, whether they receive the magazine
personally or via their assembly. In the latter case,
the email order must include the assembly name
and be paid for separately from the magazine.)

Annual subscription - for 6 issues of a PDF version \$12
alone. (This can **only** be ordered by individuals,
via email.)

We request that you please forward your payment for 2008 promptly
to the NSWAEM office to enable regular printing and postage costs to
be met. Payment can be paid by Cheque, Money Order, or by Direct
Deposit to BSB 062-212 Account 00902021, and please put the words
“AO mag for <your surname>” in the ‘Description’ field.

**Advertising Space can now be booked for the six
magazines in 2008. The total space allowed for
adverts in each issue is limited and will be allocated
on a ‘first-come first-served’ basis.**

**More information and the rates (either for a year or a single
issue) have been updated and are listed on the web-page:**

www.christianbrethren-nsw.org.au/aem/Mag/adverts.html

Elmer – a seafarer sharing his faith

from Rob Flinders
SCFS

The October 2007 magazine contained information about the work of seaport missionaries and the effect of the Word of God on the lives of some seafarers. Here is a brief account of another changed life.



Elmer is a 44 year-old seafarer from the Philippines. In 2002 he was working onboard a ship trading between ports in SE Asia and ports on the East coast of Australia. Elmer's ship visited Sydney every five weeks. On one of those occasions Rob, an SCFS port missionary, met Elmer and gave him a Bible Correspondence Course. Each time the ship returned to Sydney Rob visited Elmer and spent time with him in the Scriptures. After several months Rob had the great joy of seeing Elmer come to repentance and faith in the Lord Jesus Christ.

Eventually Elmer completed his contract and returned home to the Philippines. Sadly, with the passage of time, Rob eventually lost contact with Elmer.

In 2004 Martin, an SCFS port missionary in Hamburg, emailed Rob

with some exciting news. During one of his ship visits he found Elmer!

Elmer told Martin how he had come to Christ in Sydney two years previously. Martin said Elmer seemed to be strong in his faith. Martin also discovered that each week, when his ship is at sea, Elmer leads a Bible Study for all the Filipino crew onboard.

In 2005, while working onboard another ship, Elmer returned again to Sydney. After a joyful reunion with Rob, Elmer introduced Rob to Larry, the ship's cook. As Rob talked with Larry he discovered that Larry had come to repentance and faith in Jesus Christ as Saviour and Lord, as a consequence of Elmer's testimony and what he had learned by attending Elmer's Bible Studies.

Elmer epitomizes that which SCFS port missionaries aim to achieve - to help seafarers come to Christ and to encourage and equip those seafarers to share their faith with other seafarers.

Question: What could possibly be greater than seeing a person come to Christ?

Answer: Seeing that person grow and develop into a dedicated, fruitful, mature disciple who then goes on to lead others to Christ.

(Quoted from *The Lost Art of Disciplemaking* by LeRoy Eims.)





Note: To make it easier to visit web sites mentioned in this section, they have been included as 'hot links' on the NSW Christian Brethren web site:-

www.cb-nsw.org.au/useful-links/Links-AO.html

and they are also 'live' in the PDF version of this magazine which can be purchased in 2008 (see pages 26 and 27). Some previous issues are now stored on the web site in PDF format for people to use.

In 'Out and About' (page 4) we mentioned a current student at Emmaus Bible College, Wadie Andrawis, who is coordinating a street evangelism and training ministry in Sydney called *Seek and Save (SAS) Ministry*. Find out more about it on the web site:

www.seekandsaveministry.com/

or contact Wadie directly. He is really passionate about winning people to Christ.

In the past we have mentioned the CYC web site but, now that CYC and Lutanda have merged (see page 9) it is no longer active. The Lutanda Children's Services web site includes Camp Toukley and will be updated to incorporate the CYC camp sites soon:

www.lutanda.com.au

Those of us involved with technology in our assemblies will probably have come across the company Christian Multimedia:

www.christianmultimedia.org.au

Well, tucked away on that web site is "C.H. Mag" which turns out to be

a source for the 'Christian History Magazine':

www.christianmultimedia.org.au/chm.php

You can subscribe or obtain back issues – 95 are listed.

The magazines explore the key people, movements, and events in our Christian heritage. Each issue features articles by leading historians, a timeline, reprints of original writings and dozens of photographs and engravings, some never before in print. As the site says, "You will build your knowledge and strengthen your faith".

'Lifewords' (the organisation which has evolved from the Bible agency Scripture Gift Mission) has a more international flavour now and its web site reflects this – with eight regions of the world identified. However the team has just released a new web site which takes you automatically to the region you live in. Thus, to see what's happening in Australia, and what resources they can supply, please visit:-

www.sgmlifewords.com

and you will be taken to:

www.sgmlifewords.com/australia/en/

but be aware it's new and they would welcome feedback on how it can be improved.

As mentioned in my August '07 column, one can subscribe free to the Christian Computing magazine and receive it monthly by email. The November issue has 40 pages with many useful articles, and the whole >30

magazine can be downloaded as a PDF file from:-

www.ccmag2.com/2007_11/ccmag2007_11.pdf

One article is about updates to the Bible software "eSword" and other "Serious Language Tools". This starts on page 19 of the magazine.

Like me, readers have probably received 'chain' e-mails advising us not to see the movie "The Golden Compass" – soon to be released in Australian cinemas. It is based on a series of children's fantasy books by Phillip Pullman, who is a self-confessed atheist. An article in CCMag by Yvon Prehn, a Christian communicator, argues that the e-mails are inaccurate in some respects and it might be better for adults to see the film so we can thoughtfully and intelligently engage in debate on the non-Christian ideas that the film and the books present. This would be similar to the approach that the Apostle Paul took in Athens (Acts 17). If you want to read the full article it's on page 34 of the PDF file.

I have mentioned before the Internet Evangelism Day and its associated web site. It now gives some help to those who support church web sites:-

"Does your church's website communicate to outsiders as well as to the members?" asks a new web resource. A church web site is the congregation's 'shop window' to its community. To fulfil this function well, it must be

enticing, people-centered and easily understood by outsiders. Unfortunately, many churches are unsure how to achieve this vital mix.

So the IE Day team has launched an online self-assessment tool. It leads a church through a series of key questions, to highlight areas of their website which may need more development:

www.InternetEvangelismDay.com/design

"I think it will be very helpful to churches," comments Gene Anderson of Resurrection Lutheran Church, California.

A church site which has been prioritised for non-Christian visitors can be remarkably effective in reaching the community. "Week in, week out, more visitors turn up at our church on a Sunday because of the website, than anything else," writes one growing church in London UK that uses these principles.

The Internet Evangelism Day ('IE Day') website also explains other types of online evangelism, such as outreach sites, video clips, blogging and podcasts. There is even a free 'conversation starter' screen-saver to download.

Finally, some advice from my wonderful wife:

"Leave the computer switched off over the Christmas holidays and enjoy God's gift to mankind and some good old-fashioned family time!"



PLEASE submit all items for the February 2008 issue of this magazine BEFORE 18 January.

N.S.W. ASSEMBLIES EVANGELISTIC MISSION

ACN 001 037 690

OFFICE & BOOK SERVICE

Rear of 29 George Street,
BURWOOD, NSW 2134
P.O. Box 640,
BURWOOD NSW 1805
Ph: 9715 5520 Fax: 9715 5528

CHAIRMAN of BOARD

Charles Williams

BOARD MEMBERS

J. Pretty, C.J. Riseham,
R. Stanton, C. Winrow, A Worley

SECRETARIAT

Graham Hayden
E-mail: aemcobs@optusnet.com.au

MAGAZINE

Editor - Colin Winrow
0412 596 104
E-mail: outreach-mag@optusnet.com.au

AIMS

- To plan, initiate and support the expansion of Evangelism and Church Growth, primarily among Christian Brethren Assemblies.
- To offer opportunities in this *Assemblies Outreach* Magazine for Home Workers, Assemblies, Para-Assembly Activities and other kindred bodies, to publicise and explain their ministries.
- To generate funds, through the Book Service and other means, toward the support of NSW Home Workers.
- To provide appropriate teaching for Christians.

Further information about the Mission can be read on the NSW Brethren web site at:- www.cb-nsw.org.au/aem/

A tradition of Christian Care & Concern

Our professional staff are available
24 hours a day, 7 days a week to support you
during this difficult time in your life. We will
listen to your needs – and guide you through.

- ☐ Serving all of Sydney
- ☐ Compassion & Understanding
- ☐ Australian Owned
- ☐ Pre-paid Funerals available



Christian Funerals
of Sydney

In association with Hills Family Funerals
www.christianfuneralsosydney.com.au



24 Hour Care Line
8883 4561

Member of the
Funeral Directors
Association of NSW

Elouera Gardens

CHRISTIAN RETIREMENT VILLAGE

1-5 Kitchener Road, Cherrybrook NSW 2126

Christ's love compels us.
(2 Cor. 5:14)



Elouera Gardens Christian Retirement Village is a project of Christian Brethren Community Services, whose mission is 'to provide a high standard of professional, loving Christian care for senior citizens in modern, comfortable accommodation'.

Elouera Gardens Self-Care now comprises approximately 75 one, two, and three bedroom units of a variety of sizes and designs, catering for the varying needs of retirees. Your early application to be added to the waiting list is to be recommended.

Yurana House Hostel has a range of well-appointed rooms, each with ensuite. Care is provided for those who have been assessed by an Aged Care Team as requiring provision of all meals and personal care such as showering and medication assistance.

Bethshean Nursing Home is a modern and comfortable building, purpose built to offer a high standard of nursing care in pleasant surroundings. 50 residents can be accommodated in Bethshean, in either 2-bedroom or single rooms, all with ensuite.

For all enquiries about accommodation at Elouera Gardens, please phone (02) 9479 8000.